

# Oxford City Planning Committee Presentation

[www.oxford.gov.uk](http://www.oxford.gov.uk)



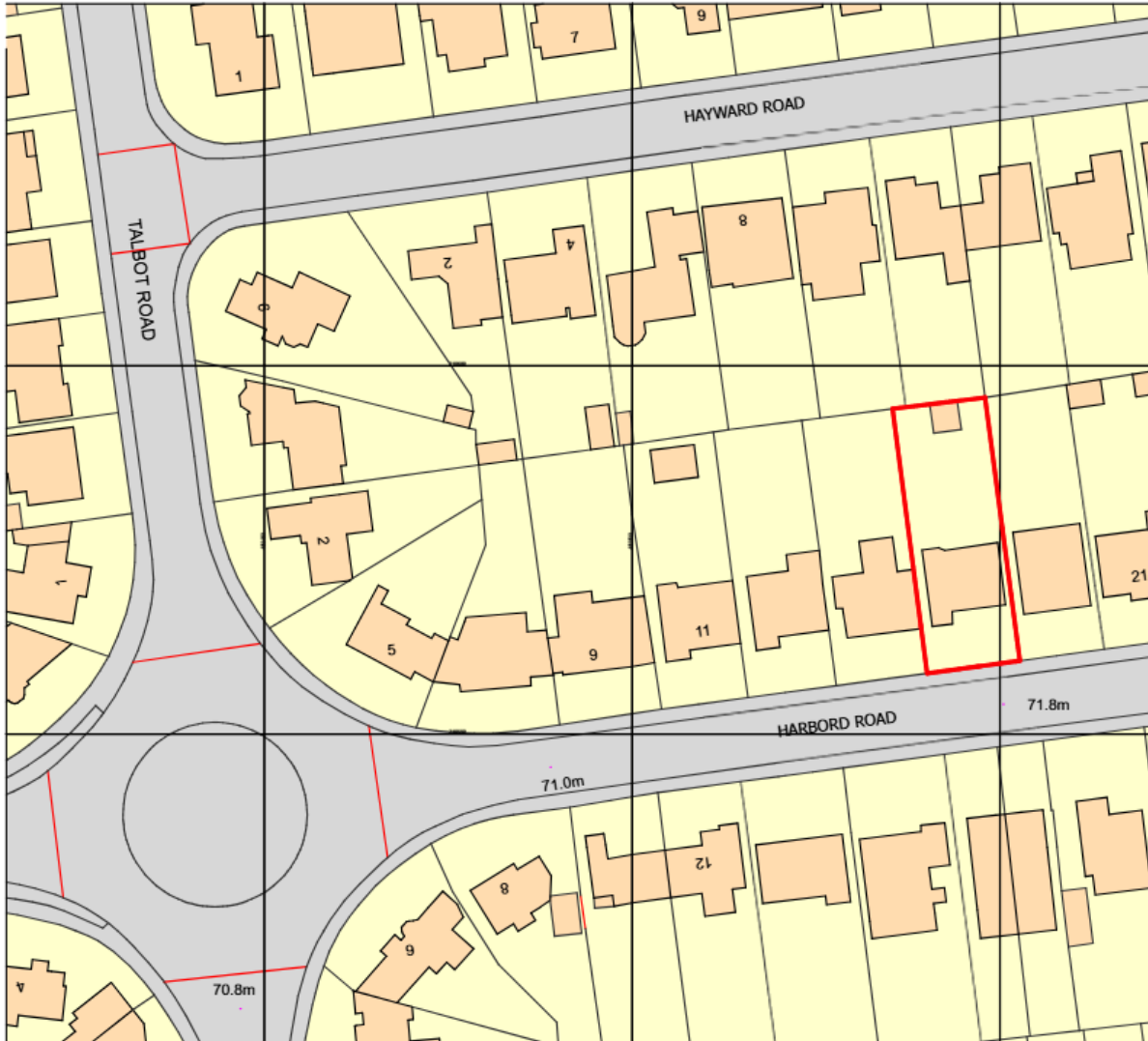
3

**Reference Number: 24/02918/FUL**

**Site Address: 17 Harbord Road, Oxford**



# Site Location



[www.oxford.gov.uk](http://www.oxford.gov.uk)



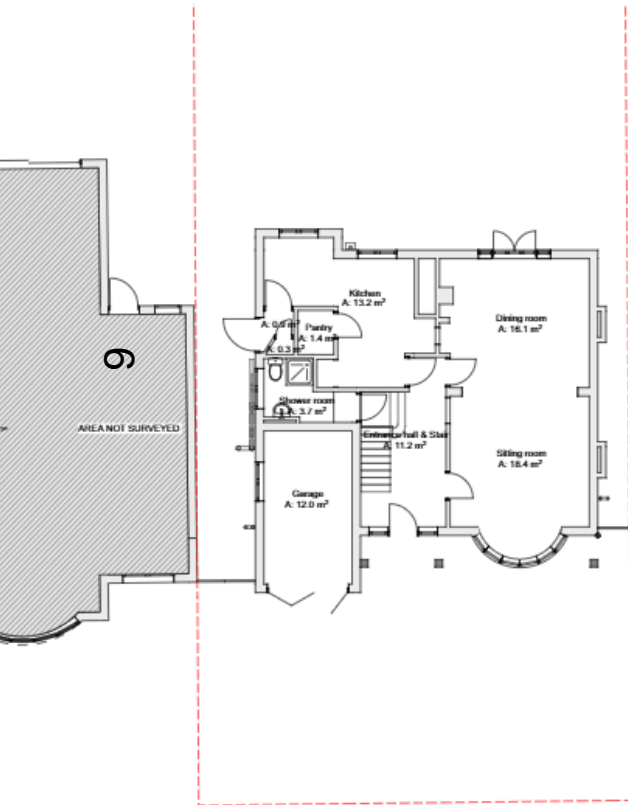
# Existing Site



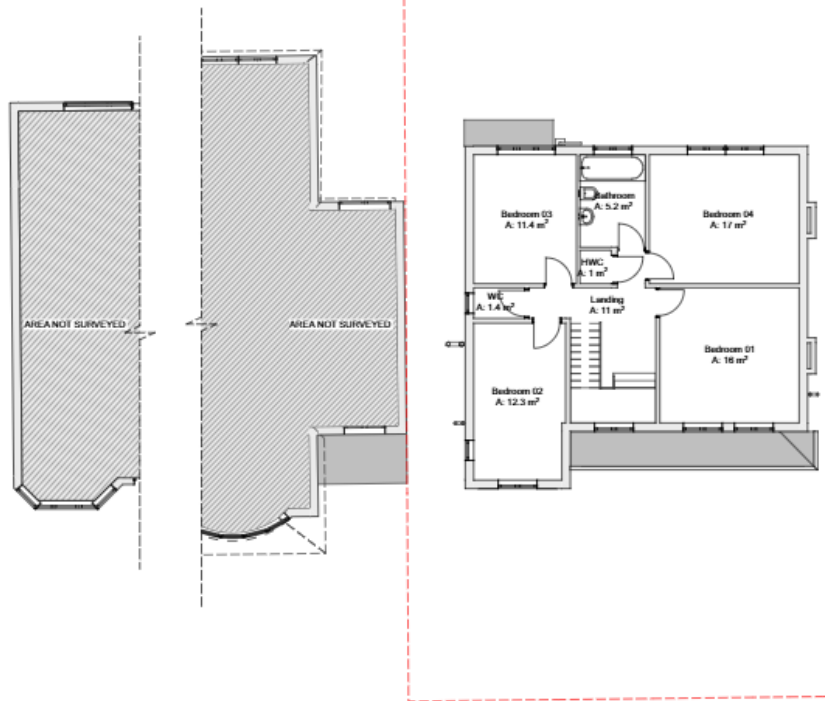
[www.oxford.gov.uk](http://www.oxford.gov.uk)



# Existing Floor Plans



Existing Ground Floor



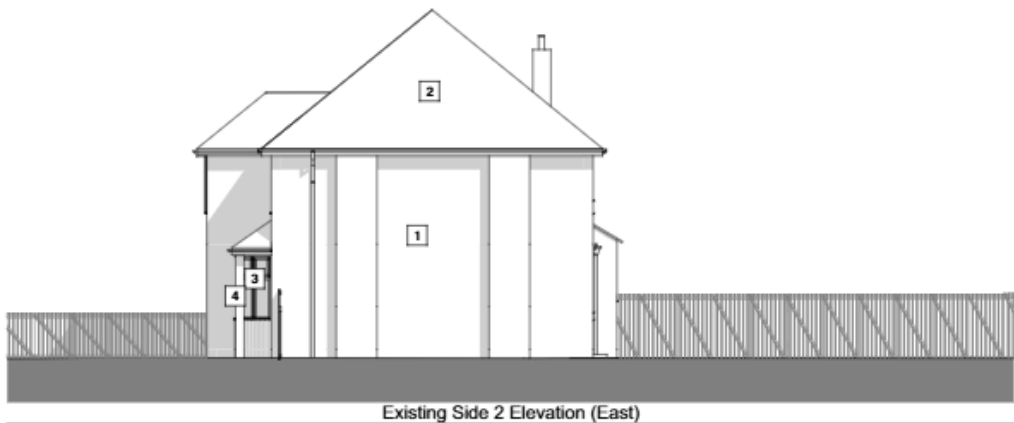
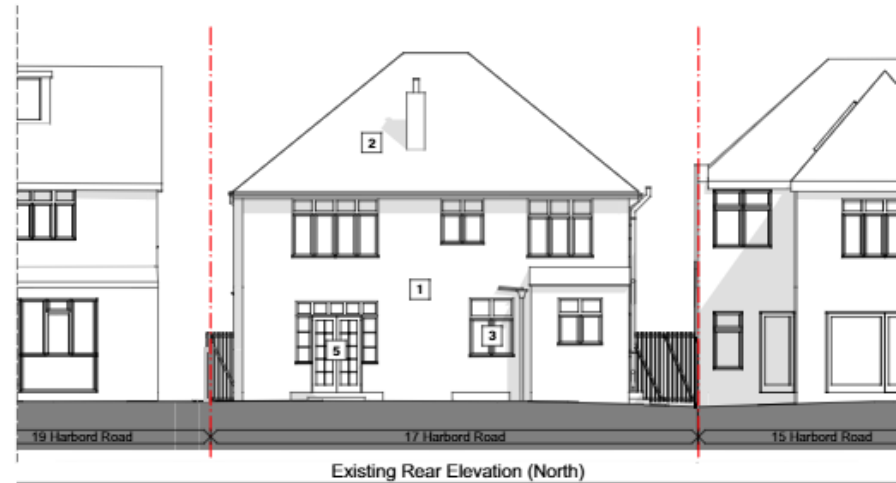
Existing First Floor



# Existing Elevations

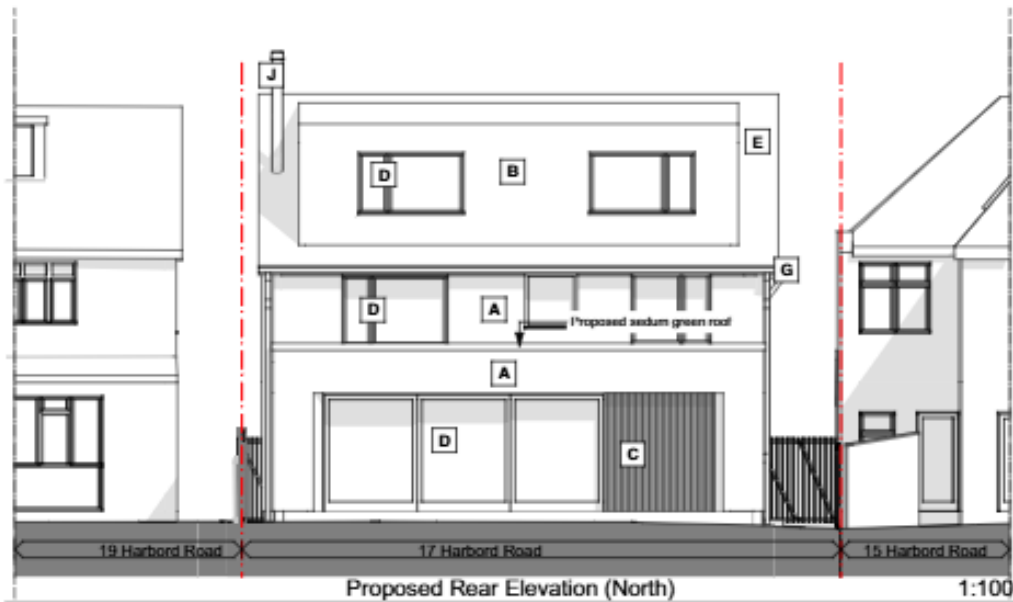


Existing



# Proposed Elevations

[www.oxford.gov.uk](http://www.oxford.gov.uk)

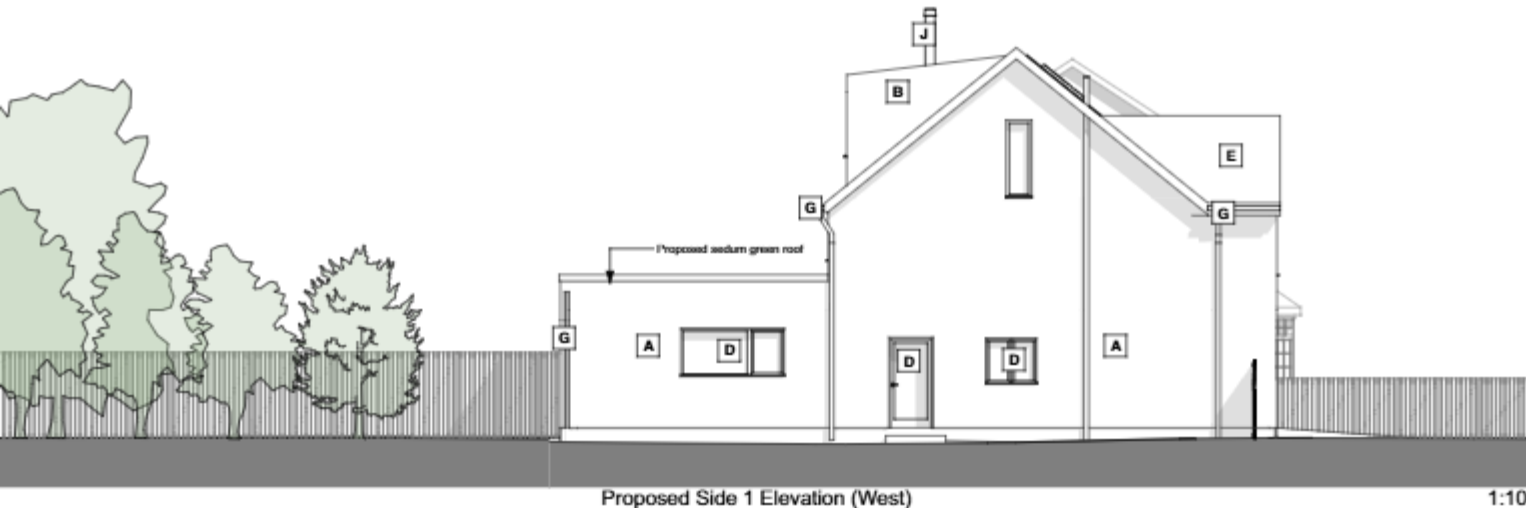
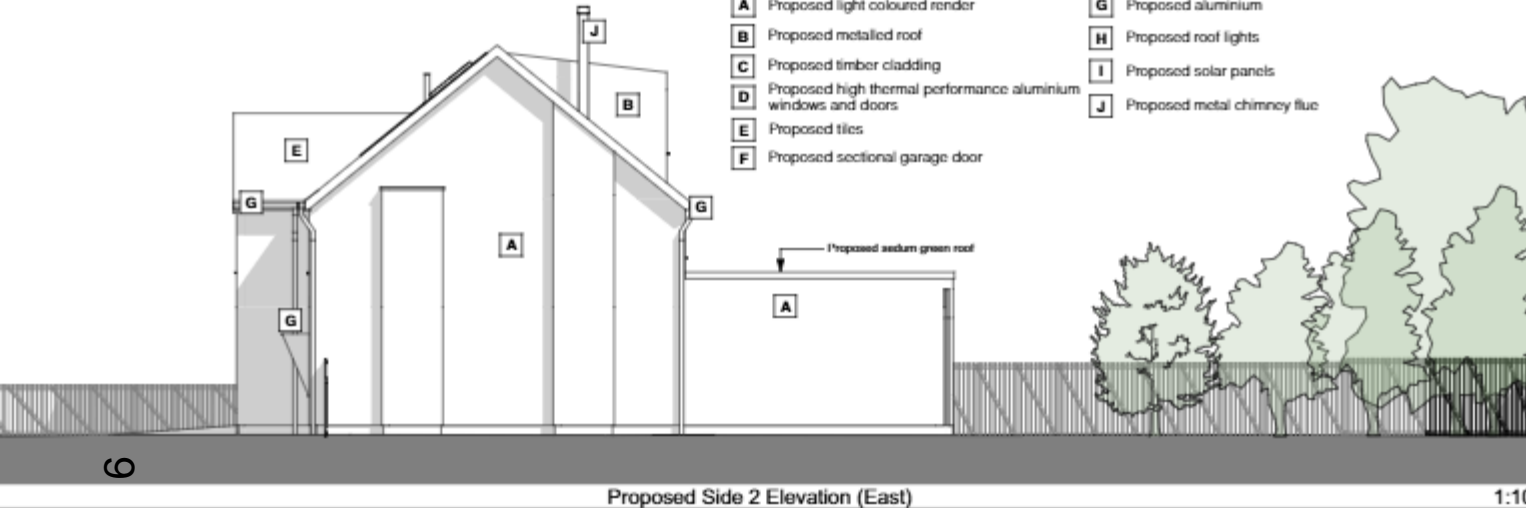




# Proposed Elevations

## SCHEDULE OF MATERIALS

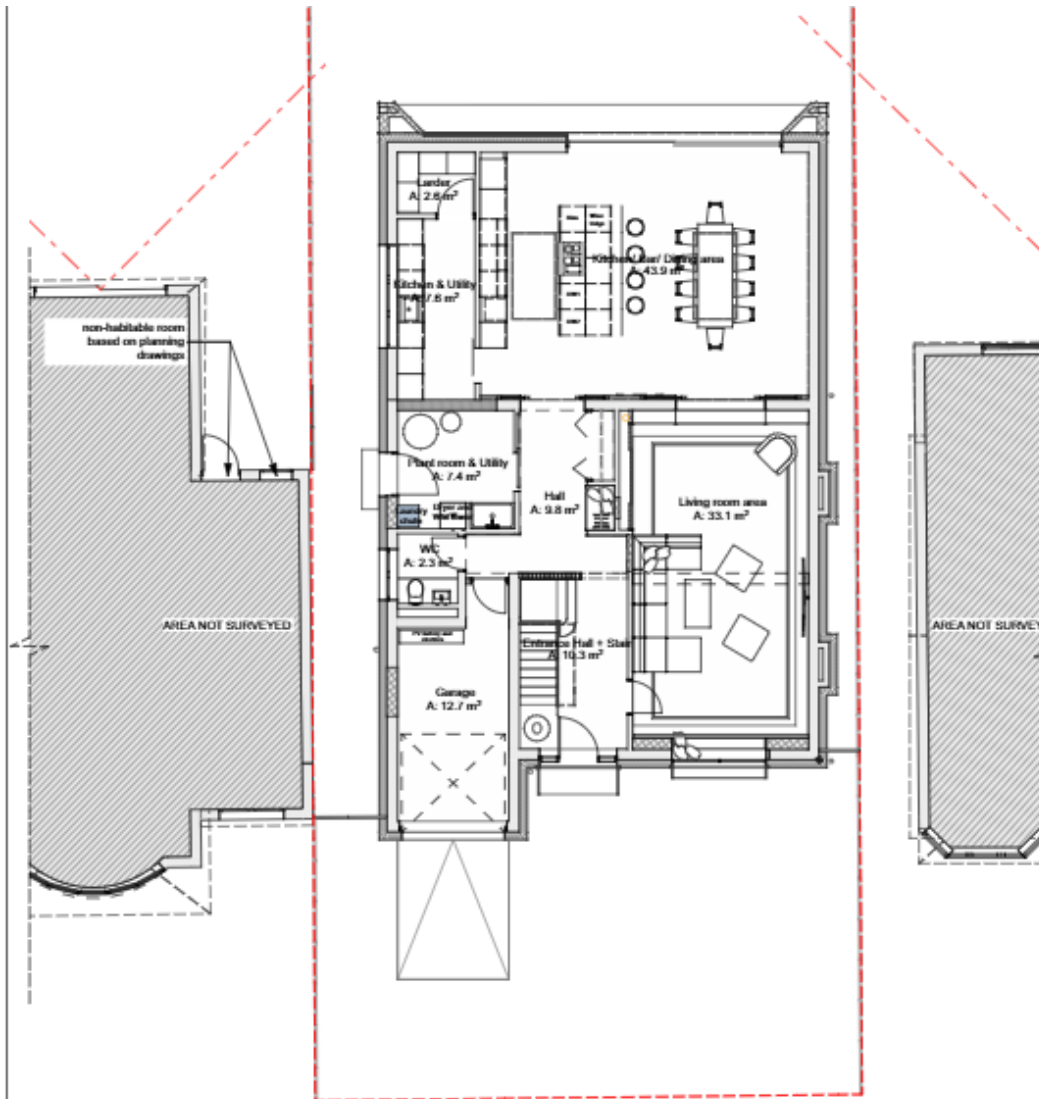
- |          |   |          |                             |
|----------|---|----------|-----------------------------|
| <b>A</b> | Proposed light coloured render                                | <b>G</b> | Proposed aluminium          |
| <b>B</b> | Proposed metallised roof                                      | <b>H</b> | Proposed roof lights        |
| <b>C</b> | Proposed timber cladding                                      | <b>I</b> | Proposed solar panels       |
| <b>D</b> | Proposed high thermal performance aluminium windows and doors | <b>J</b> | Proposed metal chimney flue |
| <b>E</b> | Proposed tiles  |          |                             |
| <b>F</b> | Proposed sectional garage door                                |          |                             |



[www.oxford.gov.uk](http://www.oxford.gov.uk)



# Proposed Ground Floor Plans



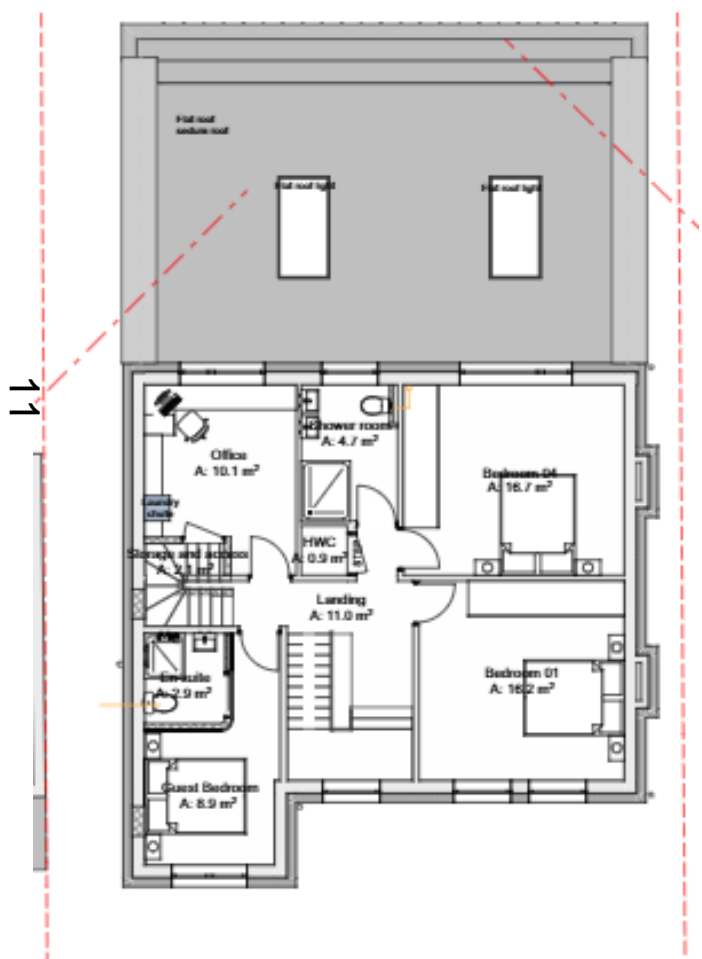
Proposed Ground Floor



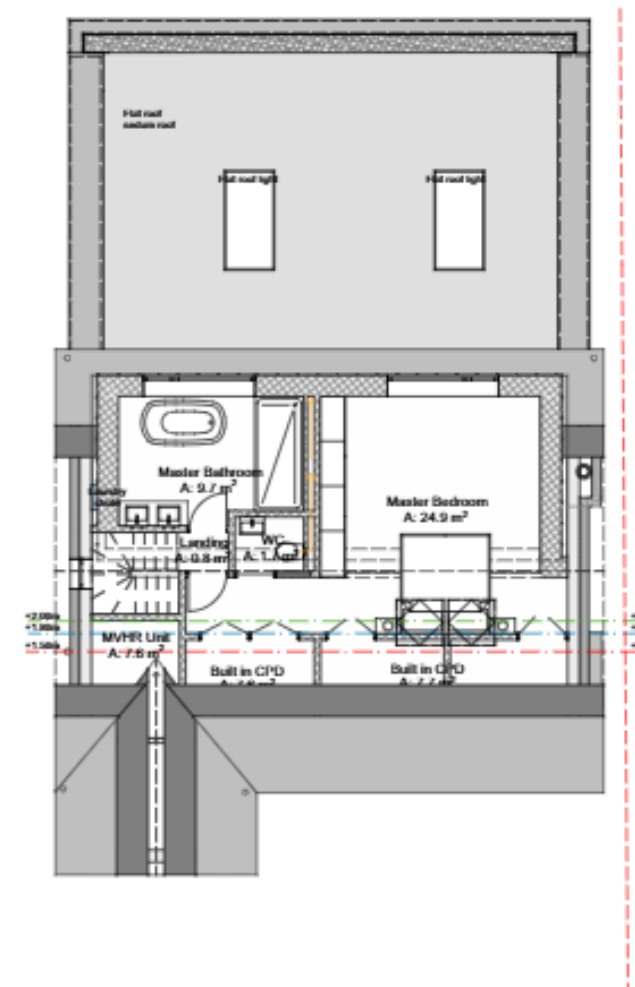


# Proposed Second Floor Plan and Loft

[www.oxford.gov.uk](http://www.oxford.gov.uk)



Proposed First Floor



Proposed Second Floor Plan



This page is intentionally left blank